

# MCCALL'S 1<sup>ST</sup> ADDITION

TO  
MCCALL TOWNSHIP.

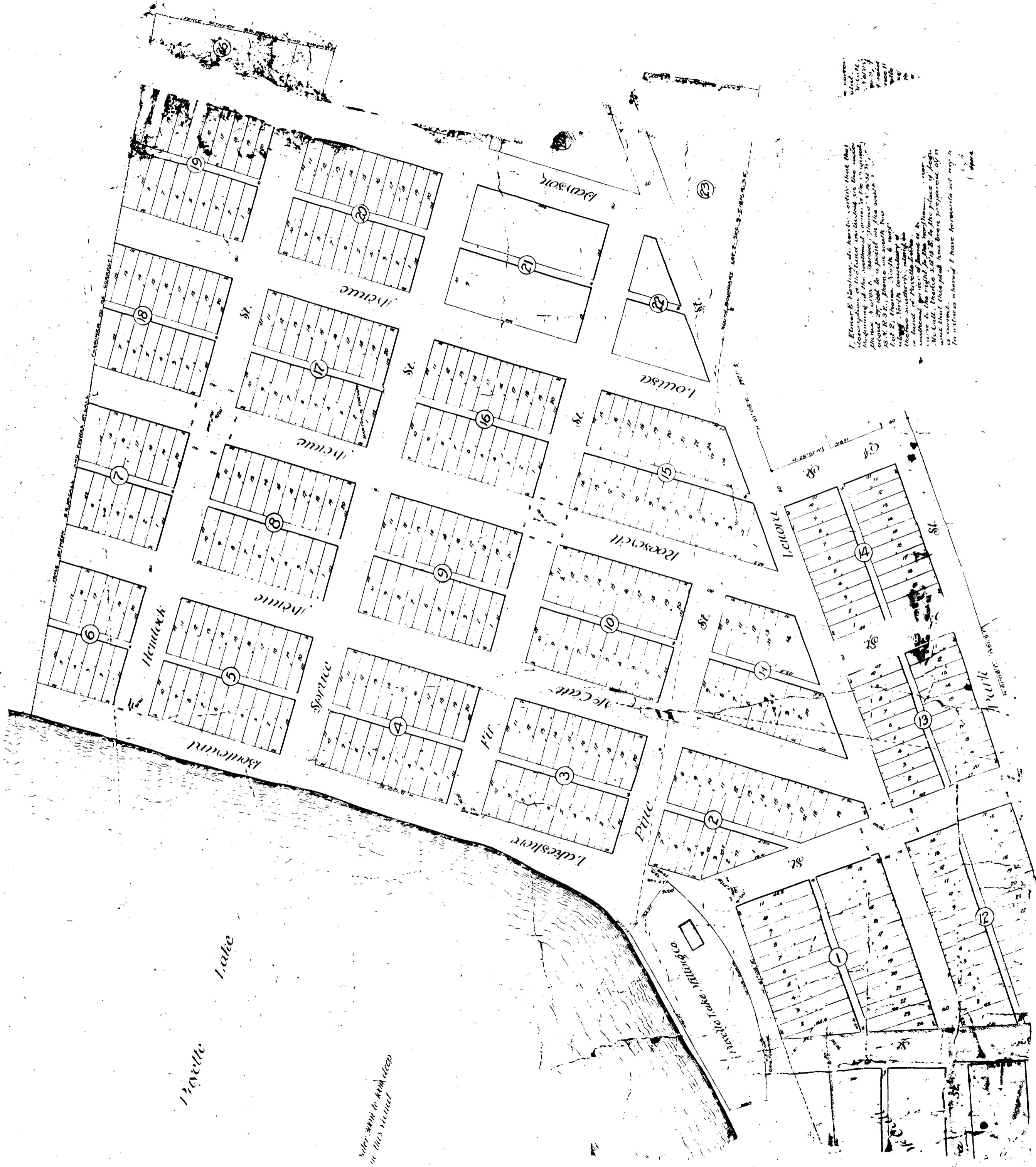
SECTION T. 15 N., R. 31 E.

BOISE CO., IDAHO.

Scale 1 inch = 100 feet.

E. E. Forsgren;  
Civil Engineer.

May, 1908.



I, E. E. Forsgren, do hereby certify that this plat is a true and correct copy of the original plat on file in the office of the County Clerk of Boise County, Idaho, and that the same has been duly recorded in the office of the County Clerk of Boise County, Idaho, and that the same is a true and correct copy of the original plat on file in the office of the County Clerk of Boise County, Idaho, and that the same has been duly recorded in the office of the County Clerk of Boise County, Idaho.

NOTE: WITH THIS PLAT DEEP  
IN THIS PLAT